

SOCMA
华南重工

HNTR4015
ROTATE TELEHANDLER

SOCMA
华南重工

福建华南重工机械制造有限公司

地址:福建省泉州市台商投资区

国内销售: 0595-27393198 27393199 传真: 0595-27393200

邮箱: office@socmachinery.com

国际销售: 0592-5650603 传真: 0592-5650876

邮箱: sales@everma.com.cn 网址: http://www.socma.net

客服热线: 400-0068-123

FUJIAN SOUTHCHINA HEAVY MACHINERY MANUFACTURE CO.,LTD.

Address: Taiwanese Investment Area, Quanzhou City, Fujian

Domestic Sales Tel: 0086-595-27393198 27393199 Fax: 0086-595-27393200

Email: office@socmachinery.com

International Sales Tel: 0086-592-5650603 Fax: 0086-592-5650876

Email: sales@everma.com.cn jackson@socmachinery.com

Customer Service Hotline: 400-0068-123



更多产品信息敬请关注
官方微信号: SOCMA123





HNTR4015

ROTATE TELEHANDLER

简介

INTRODUCTION

HNTR4015是一种具有越野性能带伸缩臂的多用途叉车，是一款适合建筑业和某些工业领域的旋转型伸缩臂叉车，为国内首创HNTR4015采用柴油驱动，静压传动、先导控制、四轮驱动四轮转向，带辅助支撑腿，落臂与伸缩带液压平衡，举升高度15米，载荷能力4.0吨，车身旋转360°，最大可向前伸长10500mm(前轮最前端至载荷中心距)，可以根据需求将它用作伸缩臂叉车、起重机或作业平台。

HNTR4015 is a multi-purpose rough terrain forklift. It is creative rotate telehandler that is suitable for construction site and some industry area. HNTR4015 adopts diesel engine, hydrostatic transmission, pilot control, 4WD full wheels driving&steering with outrigger, hydraulic stabilizer for boom placing, stretching and withdrawing, lifting height 15m, rated load capacity 4tons, 360 degree rotate chassis, Max horizontal reach 10500mm(front end of front wheel to load center).It can be used as telescopic forklift loader, crane loader or working platform.



◆ 主要应用:

隧道施工: 吊装拱架。高空作业平台配拱架机械手，拱架机械手可以牢牢抓扣拱架，伸缩臂叉装车大臂伸缩实现远近高低的调整，同时通过机械手本身的摆动油缸实现工件的准确定位。

建筑工地: 建筑材料的卸车和短途运输，将建筑材料直接投放到作业点，或给汽车吊、塔吊喂料；工地各种物料的搬运和场地清理；使用高空作业平台进行高空安装；使用玻璃吸盘安装幕墙等等。

港口、工业企业: 集装箱内托盘物资的装箱、掏箱；对各类集装物资进行装卸、码垛和短途搬运作业。

农牧业: 牧场内草料包、秸秆的搬运，草料喂给，垃圾清理。

市政、消防: 使用高空平台进行市政作业，消防抢险等。

◆ Main application:

Channel application: hoisting and lagging jack. Aerial work platform with arch manipulator, arch manipulator can grab the arch firmly, the stretching and withdrawing of the telehandler boom can realize the horizontal and height adjustment, at the same time, the swinging hydraulic cylinder of the arch manipulator can realize the accurate position of the workpiece.

Construction site: unloading and short-distance transportation of construction material. Place the construction material directly to the working site, or handle the material to truck crane, tower crane, handling all kinds of material at the working site or clearing the working site. Use the aerial work platform for aerial installation, use glass suckers to install glass curtain wall.

Port, Industrial company: load and unload the pallet cargo to container, unload stack and short-distance transport for all kinds of container cargo.

Agricultural and animal husbandry: transport of straw bundle and forage feed, clear the rubbish.

Municipal and fire-fighting: use aerial work platform for municipal operation, fire-fighting and emergency action.



HNTR4015

ROTATE TELEHANDLER

性能

PERFORMANCE

◆ 功能特点

- HNTR4015是一种具有越野性能带伸缩臂的多用途叉车，配置三节吊臂，车身旋转360°，最高可举升15m，最大载重量为4000kg，最大前伸距10500mm。
- 采用东风康明斯国Ⅲ涡轮增压柴油机，高压共轨燃油系统，动力强劲，节能环保，满足高效作业要求。
- 动力系统加装空中冷散热器，降低发动机的进气温度，提高进气量，增加了发动机的功率。
- 采用静压传动技术，具有良好的自动适应性和操纵性能；液压泵、主阀、液压马达、回转马达、中央回转接头、液压油缸、先导操纵阀均采用知名品牌。
- 采用全液压负荷传感转向系统，后转向桥转弯半径小，转向轻便灵活。
- 液压系统加装回油散热器和背压防护装置，确保整机热平衡。
- 采用液压平衡阀控制，对落臂与伸缩起限速作用，防止重物下降失控；前后支腿采用液压锁控制，保证支腿可靠地锁住，防止起重作业过程中发生“软腿”，或行驶过程中支腿的自行下落。
- 柴油机侧置在下车架，回转平台360°旋转，油、电、气线路通过中央回转接头上下无缝连接。
- 采用前轮驱动、刚性悬挂，后桥转向结构。前桥螺旋伞齿轮和轮边行星轮减速增扭，负荷能力大，使用寿命长；后桥采用横置液压缸式转向机构，转向桥结构紧凑，转向角可达40°，有利于减小转向阻力，减轻轮胎磨损，提高行驶时的平顺性。
- 采用L字形回转平台、重型回转支承，承载能力大，可抵抗外部强烈冲击。
- 采用长轴距、箱形车架，可提供良好的刚性和强度，保证叉装车底盘的高可靠性。
- 作业装置为三节箱型伸缩式工作臂，伸缩臂采用大截面、高强度的箱型结构，满足重载作业的要求。
- 采用卡斯卡特高强度货叉，强度更高，更耐磨，可成倍提高寿命。
- 采用四个钳盘式制动器，十八倍制动气压加力比，散热更快，制动可靠安全。
- 采用块状加深重型叉车轮胎，后转向桥可绕中心摆动，具有良好的牵引性能和通过性能。
- 采用可调式方向机，航空座椅，先导阀控制分配阀和工作装置油路，操纵轻便灵活，坐感更舒适。
- 采用国内优质电器元件，免维护蓄电池，电线采用阻燃材料，工作可靠耐用；驾驶室配置风扇、收音机、冷暖空调、倒车蜂鸣器。
- 多功能液晶监控器，全面监控发动机的工作状态（转速、油压、油温、水温、水位等）。
- 整机造型大气、优美、流畅；豪华宽视野驾驶室，配带天窗，噪音低，密封性好，便于驾驶员四周观察。
- 标准车型配有货叉、高空作业平台和拱架机械手，广泛应用于隧道、港口、建筑工地、工业企业、农牧业、市政消防等场合进行装卸、堆垛、短途运输和高空作业。

◆ Function Features

- HNTR4015 is a multi-purposed telescopic forklift with rough terrain ability. It is with three section boom with 360 degree rotate chassis, the max. Lifting height is 15m, max. Load capacity is 4000kg, max. Horizontal reach is 10500mm.
- Equipped with Dongfeng Cummins turbo-charged engine with common rail fuel system, the machine is powerful, energy-saving and environment-friendly. It can meet the high-efficient operation requirement.
- The power system is equipped with air-air intercooler, which reduces the inlet temperature of the engine, improve the volume of air inlet, increases the power of the engine.
- Equipped with hydro-static transmission, the machine is with good self-adaptability and operation ability. All of the hydraulic pump, main valve, hydraulic motor, rotary motor, central rotary joint, Hydraulic cylinder, pilot control valve adopts well-known brand.
- Adopts full hydraulic load sensing steering system, the turning radius of rear axle is small, the steering of portable and flexible.
- Hydraulic system is equipped with oil-return radiator and back pressure protection device, which guarantee the heat-balance for the machine.
- Adopts hydraulic balance valve control, which limit the speed of boom extension and withdrawing, preventing risk of heavy cargo out of control when descending, front & rear out trigger adopts hydraulic lock control, guarantee the out trigger can be locked reliably, preventing the failure of out trigger during the heavy load operation, or the risk of falling during traveling.
- Diesel engine is placed on the lower chassis, the slewing platform can rotate 360 degree. The oil tube, electrical wire, and gas tube was connected through central swivel joint which realize the seamless connection up and down.
- Use front wheel drive, rigid suspension, rear axle steering structure. Front spiral bevel gear and wheel rim planet reduce the speed and increase torque and the load capacity, prolong the lifespan. The rear axle adopts transversal hydraulic steering structure, the structure of steering axle is compact, with steering angle of 40°, which reduce the steering resistance and the wearing of tires, increases the traveling smoothness.
- Adopts L-shape swing platform, heavy slewing bearing with features of high support capacity, and resists the impact of outside intense impact.
- Adopts long wheel base, box-type chassis, which provide good rigidity and strength, and guarantee the high reliability of the chassis of telehandler.



- The operation device is 3-section box-type working boom, the telescopic boom use large section, high intense box-type structure, which meet the heavy load requirement.
- Adopts cascade high intense fork, which is more strong, more durable in prolong the lifespan.
- Adopts four clamp-disc brake, with rear gas storage tank, 18 times brake air pressure augmentation ratio, which features with better radiation, more reliable and safe brake.
- Adopts sectional deep heavy duty forklift tires, the rear axle can swing around the center, which features with good traction performance and passage capacity.
- Adopts adjustable steering wheel, aero seat, pilot control & distribution valve and working device oil tube, which features with portable and flexible control, more comfortable seating.
- Adopts domestic high quality electrical components, maintenance-free battery, electric wire adopts Anti flame retardant material, which features with high working reliability and durability, the cab equipped with fan, radio, warm & cooling A/C, reversing buzzer.
- The multi-purposed LCD monitor supervise the working condition in all aspects including turning speed, oil pressure, oil temperature, water temperature, water level Etc.
- The whole machine appearance is exquisite, graceful and smooth, the luxurious wide view cab is equipped with sunroof, which features with low noise, good sealing and convenient for all around observation for the driver.
- The standard truck is equipped with fork, aerial working platform and arch manipulator, which is widely used in tunnel, port, construction site, industrial company, agricultural and animal husbandry, municipal fire-fighting for the work of load and unloading, stacking, short-distance transmutation and aerial working.

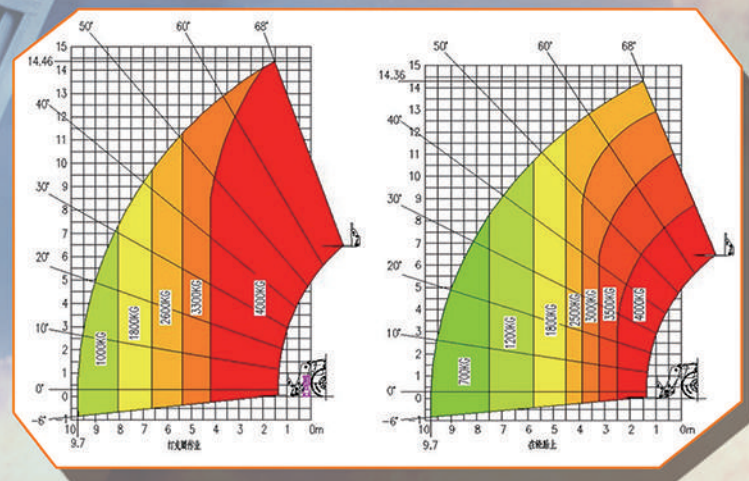
HNTR4015

ROTATE TELEHANDLER

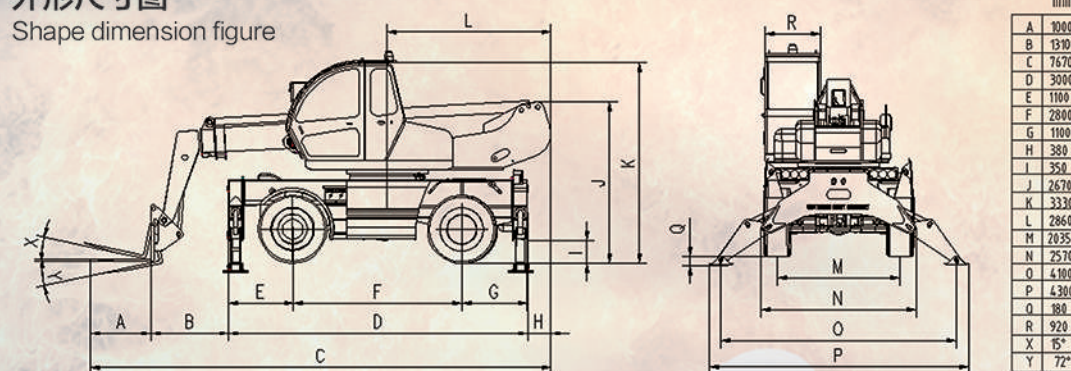
技术参数

TECHNICAL PARAMETERS

HNTR4015载荷图(参考)
LOAD CHART (REFERENCE)



外形尺寸图
Shape dimension figure



技术参数/TECHNICAL PARAMETERS

HNTR4015					
项目		Description		参数Specifications	单位Unit
整机重量		Working weight		16500	Kg
发动机功率		Engine power		93	Kw
最大有效载荷		Max.capacity		4000	Kg
举升高度		Lifting height		15000	mm
最大高度时的伸长量		Max.reach at full height		13120	mm
向前最大伸出量		Max.forward reach		13120	mm
轴距 F		Wheel base		2980	mm
轮距 M		Tread		2030	mm
最小离地间隙		Min.ground clearance		290	mm
整机长度（后端至叉尖部）C		Overall length(backend to fork)		7760	mm
主机最大长度(尾部到前轮胎前面)		Max.length(backend to fork)		4850	mm
主机最大宽度(包括支腿）N		Max.width(including outrigger)		2570	mm
主机最大高度（包括灯）K		Max.heigh(including toplight)		3330	mm
货叉长度 A		Fork length		1000	mm
后悬长度		Length of suspension		1500	mm
后桥摆动角	左	Adjust angle of Rear axle	Left	10	°
	右		Right	10	°
离去角		Departure angle		21	°
属具架前倾角 Y		Front tilt angle of attachment steady		72	°
属具架后倾角 X		Back tilt angle of attachment steady		15	°
伸缩臂最大俯角（支腿收起）		Max.depression angle(outriger not on ground)		3	°
最大仰角（支腿撑地）		Max.elevation angle(outriger on ground)		70	°
驾驶室宽度 R		Cab internal width		920	mm
最大牵引力（无载荷）		Max.traction(without load)		60	Kn
最小转弯半径（轮胎外侧）		Min. turning radius(tires lateral)		5600	mm
最大爬坡能力		Max. climbing ability		3	%
脚制动型式		Foot brake type/hydraulic brake		8	Mpa
手制动型式		Hand brake type		4.4	Mpa
行驶速度	前进 1 挡	Traveling speed	Forward 1	6.5	Km/h
	前进 2 挡		Forward 2	28	Km/h
	后退 1 挡		Backward 1	6.5	Km/h
	后退 2 挡		Backward 2	28	Km/h
前后轮胎尺寸规格		Tyres		45 × 16-20 36PR	

注: 由于技术改进, 该数据可能与产品不符, 如有差异请以产品为准。
Note: the above date are subject to change without prior notice.